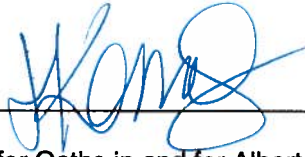


# TAB H

This is Exhibit "H" referred to in  
the affidavit of Scott McCorquodale  
SWORN before me this 29<sup>th</sup> day of March, 2018



\_\_\_\_\_  
A Commissioner for Oaths in and for Alberta

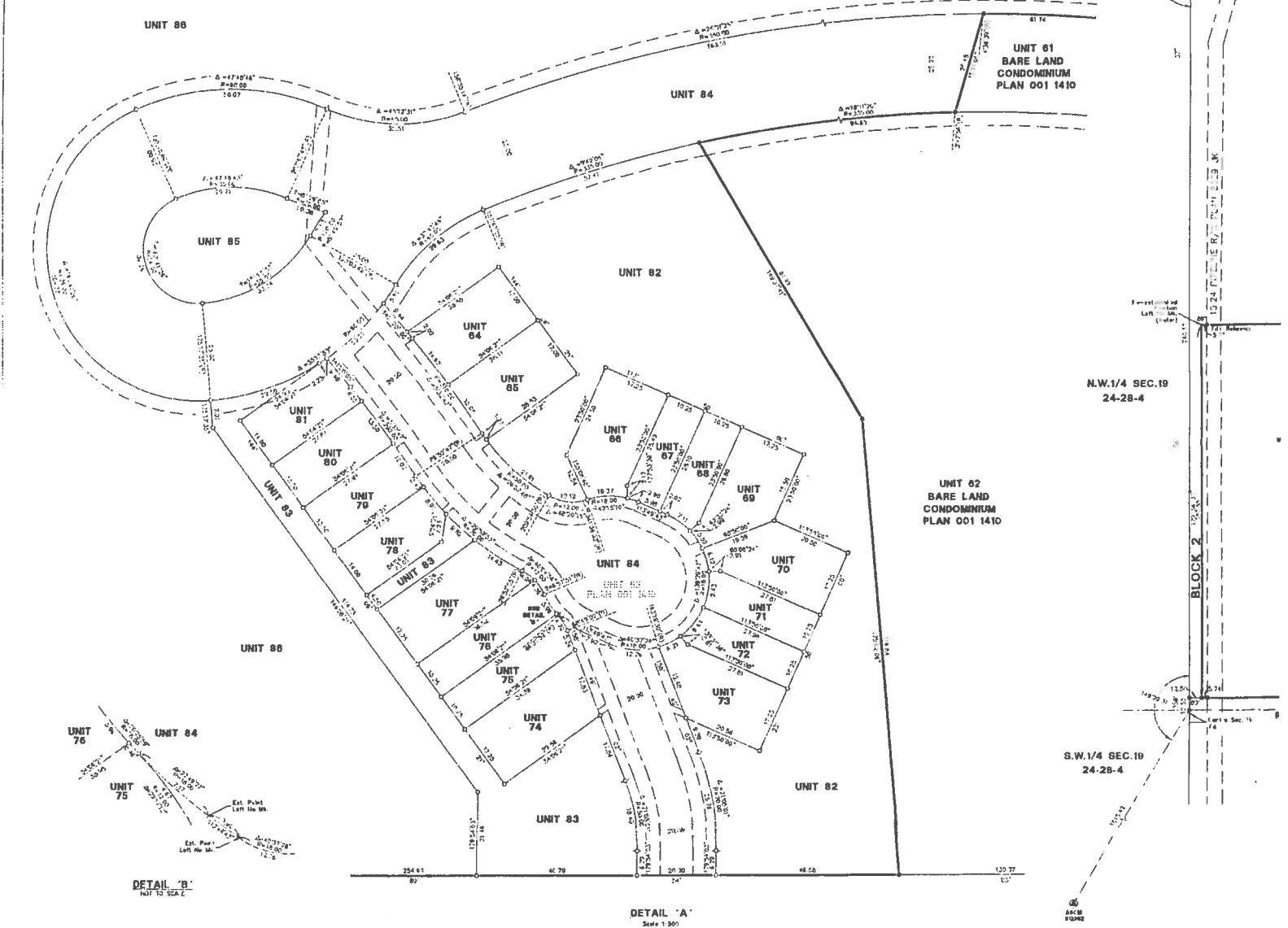
**Jillian R. Karras**  
Barrister & Solicitor

This plan may not be acceptable as distributed, amended or substituted in any form without the explicit written consent of Albany Land Title.

UNIT NUMBER	UNIT FACTOR	UNIT AREA (Approx. m <sup>2</sup> )	UNIT NUMBER	UNIT FACTOR	UNIT AREA (Approx. m <sup>2</sup> )
43	1.0	882.5	51	1.0	816.1
44	1.0	882.5	52	1.0	816.1
45	1.0	882.5	53	1.0	816.1
46	1.0	882.5	54	1.0	816.1
47	1.0	882.5	55	1.0	816.1
48	1.0	882.5	56	1.0	816.1
49	1.0	882.5	57	1.0	816.1
50	1.0	882.5	58	1.0	816.1
51	1.0	882.5	59	1.0	816.1
52	1.0	882.5	60	1.0	816.1
53	1.0	882.5	61	1.0	816.1
54	1.0	882.5	62	1.0	816.1
55	1.0	882.5	63	1.0	816.1
56	1.0	882.5	64	1.0	816.1
57	1.0	882.5	65	1.0	816.1
58	1.0	882.5	66	1.0	816.1
59	1.0	882.5	67	1.0	816.1
60	1.0	882.5	68	1.0	816.1
61	1.0	882.5	69	1.0	816.1
62	1.0	882.5	70	1.0	816.1
63	1.0	882.5	71	1.0	816.1
64	1.0	882.5	72	1.0	816.1
65	1.0	882.5	73	1.0	816.1
66	1.0	882.5	74	1.0	816.1
67	1.0	882.5	75	1.0	816.1
68	1.0	882.5	76	1.0	816.1
69	1.0	882.5	77	1.0	816.1
70	1.0	882.5	78	1.0	816.1
71	1.0	882.5	79	1.0	816.1
72	1.0	882.5	80	1.0	816.1
73	1.0	882.5	81	1.0	816.1
74	1.0	882.5	82	1.0	816.1
75	1.0	882.5	83	1.0	816.1
76	1.0	882.5	84	1.0	816.1
77	1.0	882.5	85	1.0	816.1
78	1.0	882.5	86	1.0	816.1
79	1.0	882.5	87	1.0	816.1
80	1.0	882.5	88	1.0	816.1
81	1.0	882.5	89	1.0	816.1
82	1.0	882.5	90	1.0	816.1
83	1.0	882.5	91	1.0	816.1
84	1.0	882.5	92	1.0	816.1
85	1.0	882.5	93	1.0	816.1
86	1.0	882.5	94	1.0	816.1
87	1.0	882.5	95	1.0	816.1
88	1.0	882.5	96	1.0	816.1
89	1.0	882.5	97	1.0	816.1
90	1.0	882.5	98	1.0	816.1
91	1.0	882.5	99	1.0	816.1
92	1.0	882.5	100	1.0	816.1

NOTE:  
FOR ANY ENDORSEMENT, REGISTRATION MEMORIAL, NOTIFICATION OR OTHER ENTRY THAT IS TO BE MADE UPON THIS PLAN, PLEASE SEE SHEET PLAN BELLAIR WHICH IS ADDED TO THIS PLAN PURSUANT TO THE CONDOMINIUM PROPERTY ACT REGULATIONS.  
DATED DECEMBER 21 2008.  
**IAN ANDERSON**  
A.D. REGISTRAR

UNIT FACTORS ARE PROPORTIONAL TO THE NUMBER OF UNITS IN EACH UNIT GROUP FOR THE COMMON USE AREA UNITS P3 TO P5. EACH UNIT HAS BEEN ASSIGNED A UNIT FACTOR OF 1.





# TAB I

This is Exhibit "I" referred to in  
the affidavit of Scott McCorquodale  
SWORN before me this 29<sup>th</sup> day of March, 2018



\_\_\_\_\_  
A Commissioner for Oaths in and for Alberta

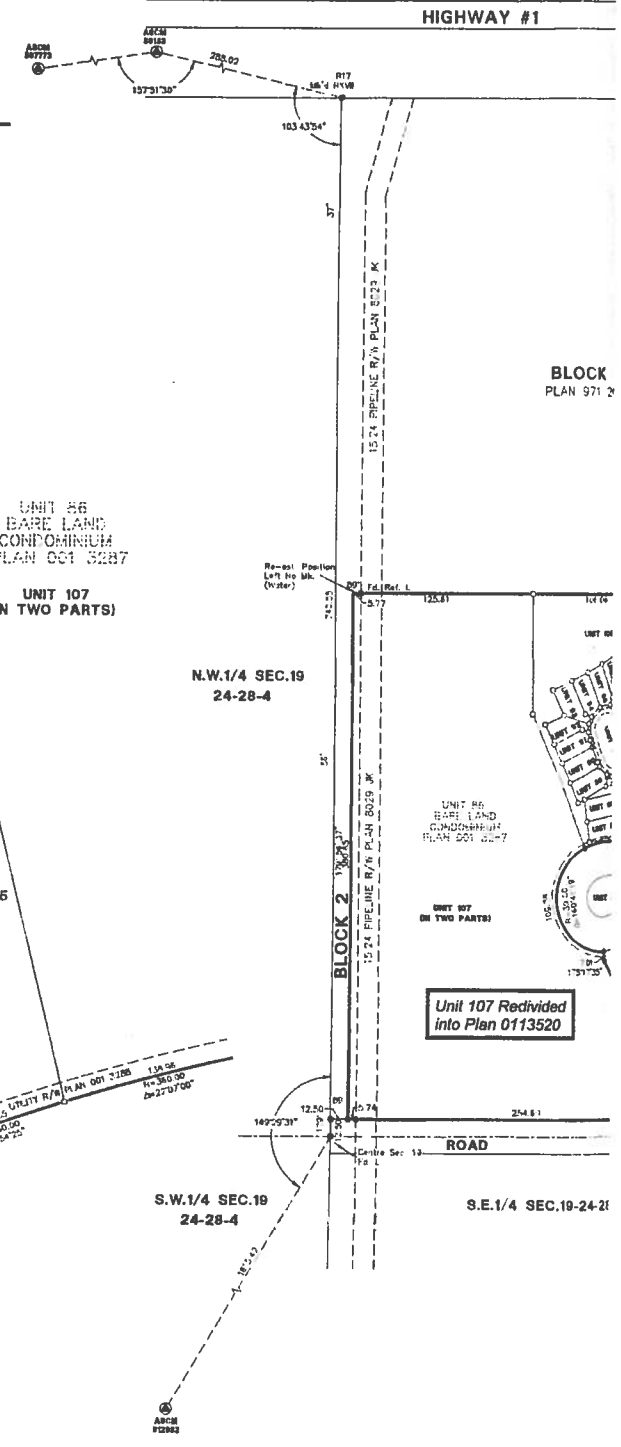
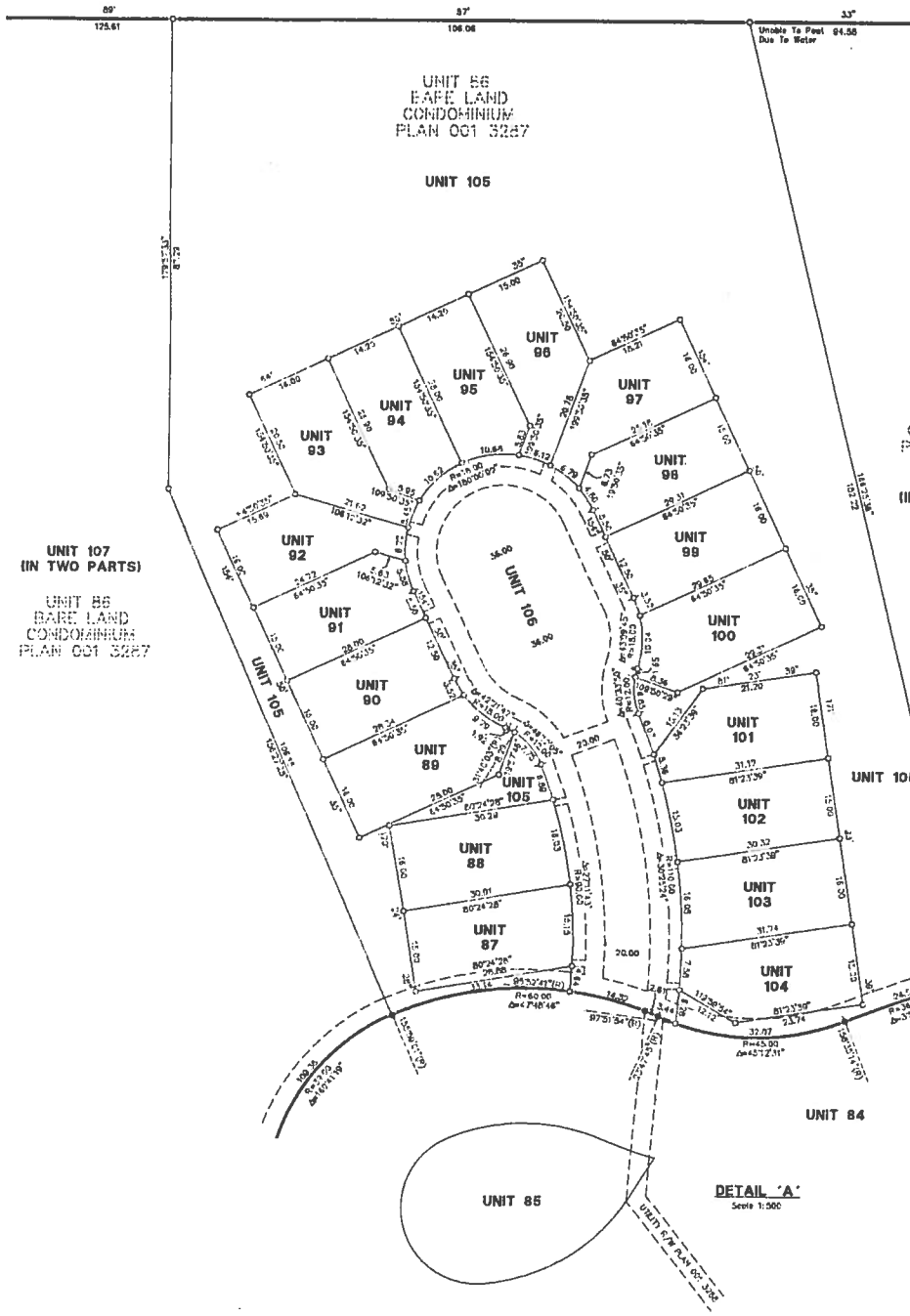
**Jillian R. Karras**  
**Barrister & Solicitor**

This plan may not be necessarily re-distributed, reproduced or manipulated in any form without the explicit written consent of Alpine Land Title

UNIT NUMBER	UNIT FACTOR	UNIT AREA (Approx. m <sup>2</sup> )	UNIT NUMBER	UNIT FACTOR	UNIT AREA (Approx. m <sup>2</sup> )
67	84	431.7	103	70	493.1
68	70	457.4	104	83	458.4
69	70	499.7	105	1	1032.0
70	84	448.7	106	1	2743.8
71	70	417.4	107	42.75	1800.0
72	87	474.6	TOTAL	743.7	15335.2
73	87	451.0			
74	80	418.8			
75	50	258.2			
76	47	235.4			
77	47	235.4			
78	81	320.0			
79	87	460.3			
101	74	511.7			
102	84	450.0			
103	80	458.0			

UNIT FACTORS ARE PROPORTIONAL TO THE INTERIOR AREA OF EACH UNIT EXCEPT COMMON USE AREA UNITS 100 AND 106 INCLUSIVE WHICH HAVE BEEN ASSIGNED A UNIT FACTOR OF 1, WITH UNIT 107 BEING ASSIGNED THE REMAINDER AMOUNT.

**BLOCK 2**  
PLAN 971 2096



1  
TIVE PLAN 881 1045

S.E.1/4 SEC.30-24-28-4

ROAD WIDENING PLAN 761 0158

(TRANS-CANADA HIGHWAY)

ROAD ALLOWANCE

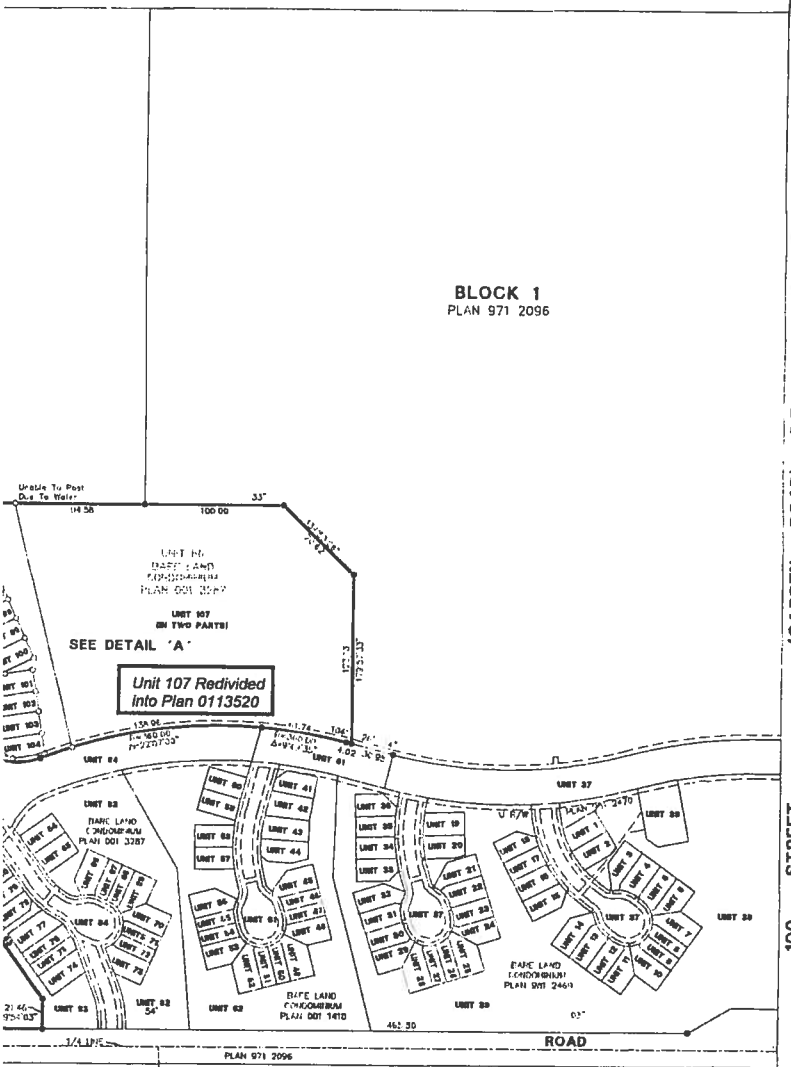
ROAD WIDENING PLAN 761 0158

S.W.1/4 SEC.29  
24-28-4

**NOTE:**  
FOR ANY ENDOWMENT, REGISTRATION MEMORIAL,  
NOTIFICATION OR OTHER ENTRY THAT IS TO BE  
MADE UPON THE PLAN, PLEASE SEE SHEET 2.  
**Plan 9812469**  
WHICH IS ADDED TO THIS PLAN PURSUANT TO THE  
CONDOMINIUM PROPERTY ACT REGULATIONS.  
DATED June 13, 2001  
Kath Stang  
A.D. REGISTRAR

**REGISTRAR**  
LAND TITLES OFFICE  
  
PLAN NO. 0111629  
ENTERED AND REGISTERED  
ON June 13, 2001  
INSTRUMENT NO. 011164481  
  
Kath Stang  
A.D. REGISTRAR

SHEET 1 OF 1



**BLOCK 1**  
PLAN 971 2096

ROAD ALLOWANCE  
S.E.  
100 STREET  
(GARDEN ROAD)



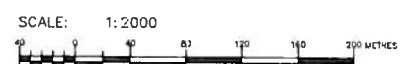
M.D. OF ROCKY VIEW No. 44  
**PRINCE OF PEACE VILLAGE**  
PLAN SHOWING SURVEY OF  
**BARE LAND CONDOMINIUM**

**REDIVISION OF UNIT 86**  
**BARE LAND CONDOMINIUM PLAN 001 3287**

WITHIN THE  
**N.E.1/4 SEC.19, TWP.24, RGE.28, W.4thM.**

SYDNEY M. LOEPPKY, A.L.S., 2001

**2001**



**SURVEYOR**  
NAME: SYDNEY M. LOEPPKY, ALBERTA LAND SURVEYOR



THE SURVEY WAS PERFORMED BETWEEN THE DATES OF MARCH 10, 1999  
AND FEBRUARY 15, 2001.

**NOTES**  
THE BASIS OF THIS PLAN IS AS FOLLOWS:  
DATUM - NORTH AMERICAN DATUM 1983  
PROJECTION - U.T.M. TRANSVERSE MERCATOR  
CORRECTION FACTOR - 0.999936  
REFERENCE MERIDIAN - 111° WEST LONGITUDE  
  
DISTANCES ARE IN METRES AND DECIMALS THEREOF.  
IRON PEGS AND IRON BARS ARE SHOWN FROM A LINE JOINING  
ASCM 592723 AND ASCM 205333.  
THE AREA TO BE REGISTERED BY THIS PLAN IS OUTLINED THIS  
AND CONTAINS 71 UNITS.  
ALL INSTANCES OF EQUIPPED BOUNDARIES ARE INDICATED BY DASHES.  
ALL STATUTORY IRON PEGS PLACED ARE MARKED P025  
THE BOUNDARY OF ANY UNIT IS COVERED BY THE MONUMENTS PLACED  
PURSUANT TO THE SURVEYOR'S ACT.

**LEGEND**  
STATUTORY IRON PEGS FOUND SHOWN THIS  
STATUTORY IRON PEGS PLACED SHOWN THIS  
ALBERTA SURVEY CONTROL MARKER IS SHOWN THIS  
ACCM DENOTES ALBERTA SURVEY CONTROL MARKER  
A.L.S. DENOTES ALBERTA LAND SURVEYOR  
S.E.C. DENOTES SECTION  
T.M.P. DENOTES TOWNSHIP  
RANGE DENOTES RANGE  
M DENOTES MERIDIAN  
N DENOTES NORTH  
S DENOTES SOUTH  
E DENOTES EAST  
W DENOTES WEST  
F.L. DENOTES FOUND  
U.R/W DENOTES UTILITY RIGHT-OF-WAY  
A DENOTES ANGLE SUBTENDED BY THE CURVE  
DENOTES BACKSIGHT  
(R) DENOTES RADIAL BEARING  
P=ML DENOTES RE-ESTABLISH  
P=I DENOTES REFERENCE

**BLOCK 1**  
PLAN 1772 JK

S.W.1/4 SEC.20  
24-28-4

**REGISTERED OWNER**  
**LUTHERAN CHURCH-CANADA,**  
**THE ALBERTA-BRITISH COLUMBIA DISTRICT**

**SUBDIVISION AUTHORITY**

NAME: THE M.D. OF ROCKY VIEW NO. 44  
FILE NO: 431004/26-RV-163  
DATE APPROVED: MAY 15, 2001

